

## Support Groups

(held twice per month at IBR)

Aspergers Support Group

Mothers Support Group

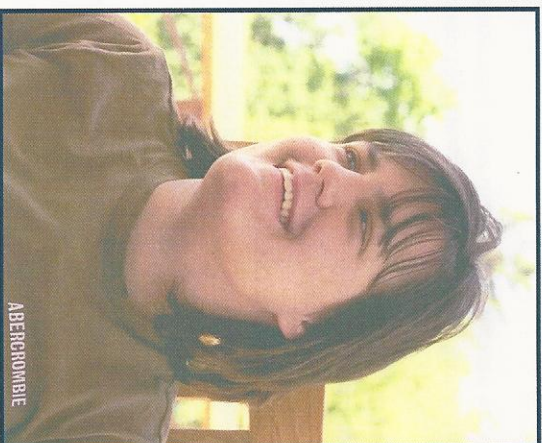
Fathers Support Group

Sibling Support Group

Please call for schedules  
(718) 494-4872



1995



2010

This is Jacqueline Goepel, her mother is Marie Goepel. Jacqueline was the motivating force behind her mother's tireless efforts to educate herself and other parents of children with disabilities, under the auspices of Parent to Parent.

## STATEN ISLAND SPECIAL EDUCATION PARENT CENTER



NYS Institute for Basic Research  
In Developmental Disabilities

1050 Forest Hill Road  
Staten Island, NY 10314  
Tel: (718) 494-4872  
Fax: (718) 494-4805



## PARENT TO PARENT NY, INC.

### WE ARE: PARENTS HELPING PARENTS

Learning that your child has special needs or a disability can be a traumatic experience. Parents have many questions and concerns in dealing with their child's needs (medical, developmental, educational or social) and their own feelings.

#### YOU ARE NOT ALONE...

#### WE CARE!

#### WE HAVE BEEN THERE!

- \* Individualized support from another parent, who has had similar experiences and feelings can be helpful in coping with many challenging situations.
- \* We are not counselors or therapists. We are fellow parents of special needs children who give informational and emotional support, encourage parents to feel comfortable and optimistic about the future.

#### WE CAN HELP ...

- \* If you would like assistance from a trained Support Parent Specialist, please contact us.
- \* A Support Parent, who has a child with special needs, will contact you within 24-48 hours and arrange to assist you by phone or in-person.

#### WE RECEIVE REFERRALS FROM...

Relatives, Friends, Neighbors, School Staff, Medical Staff, Therapists, Community Agencies and Other Professionals

#### ALL INFORMATION WILL BE KEPT CONFIDENTIAL

THERE IS NO FEE FOR OUR SERVICES.

## THE STATEN ISLAND SPECIAL EDUCATION PARENT CENTER

Parent to Parent NY Inc. provides Special Education supports and activities under the **Staten Island Special Education Parent Center (SEPC)** - funded by the NY State Education Department / Office of Adult Career & Continuing Education Services- Vocational Rehab to Individuals with Disabilities (NYSED/ACCES-VR).

#### As the Staten Island SEPC, our focus and mission will be to...

- \* Provide parents of children with disabilities the information, resources, and strategies needed to:
  - Promote meaningful involvement in their children's Individualized Education Programs (IEP).
  - Promote early resolution of disputes between parents and school districts.
  - Promote use of resolution sessions and special education mediation.
  - Understand their Procedural Due Process rights.
- \* Collaborate with public school districts on methods to facilitate positive parent involvement.
- \* Assist NYSED-ACCES to identify and promote effective practices for positive parental involvement in the special education process.

## OUR SERVICES

- \* One-to-one emotional and informational support for parents of children with special needs.
- \* Family member and disability-related support group meetings.
- \* Up to date information and resources.
- \* Lending library of books and other resource materials.
- \* Workshops, trainings and information sessions to educate parents/professionals and improve special education services and outcomes for students.
- \* Outreach presentations to parent groups, community organizations and professionals.
- \* Collaboration with parent groups, schools and community agencies to foster parent-school partnerships.

#### HOW TO CONTACT US:

Tel: (718) 494-4872, 4879  
Fax: (718) 494-4805  
E-mail: [siptp@aol.com](mailto:siptp@aol.com)

Mail:

**Parent to Parent NY, Inc.**  
**SI Special Education Parent Center**  
**NYS Institute for Basic Research**  
1050 Forest Hill Road  
Room 106  
Staten Island, NY 10314-6399